

STANDARD RACK
(with output terminal block)

MODEL **17BXE-UT**

BEFORE USE

Thank you for choosing us. Before use, please check contents of the package you received as outlined below. If you have any problems or questions with the product, please contact our sales office or representatives.

PACKAGE INCLUDES:

Standard rack.....(1)

MODEL NO.

Confirm Model No. marking on the product to be exactly what you ordered.

INSTRUCTION MANUAL

This manual describes necessary points of caution when you use this product, including installation, connection and basic maintenance procedures.

POINTS OF CAUTION

POWER INPUT RATING & OPERATIONAL RANGE

- Locate the power input rating marked on the product and confirm its operational range as indicated below:
 85 – 132V AC rating: 85 – 132V, 47 – 63 Hz, approx. 100VA
 170 – 264V AC rating: 170 – 264V, 47 – 63 Hz, approx. 100VA
 24V DC rating: 24V ±10%, approx. 70W
 110V DC rating: 85 – 150V, approx. 70W

GENERAL PRECAUTIONS

- Before you remove the unit from the rack or mount it, turn off the power supply and input signal for safety.

ENVIRONMENT

- Indoor use.
- When heavy dust or metal particles are present in the air, install the rack inside proper housing and ventilate it.
- Do not install the rack where it is subjected to continuous vibration. Do not subject the unit to physical impact.
- Environmental temperature must be within -5 to +55°C or 23 to 131°F (0 to 50°C or 32 to 122°F for AC power) with relative humidity within 40 to 85% RH in order to ensure adequate life span and operation.
- Be sure that the ventilation slits are not covered with cables, etc.

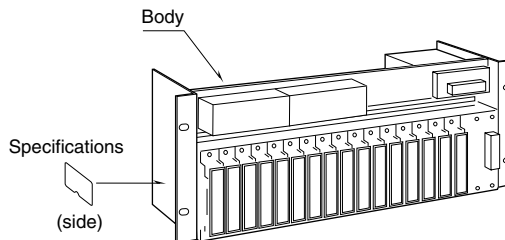
WIRING

- Do not install cables close to noise sources (relay drive cable, high frequency line, etc.).
- Do not bind these cables together with those in which noises are present. Do not install them in the same duct.

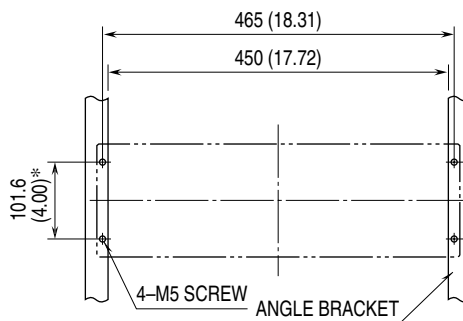
AND

- The unit is designed to function as soon as power is supplied, however, a warm up for 10 minutes is required for satisfying complete performance described in the data sheet.

COMPONENT IDENTIFICATION



MOUNTING REQUIREMENTS unit: mm (inch)



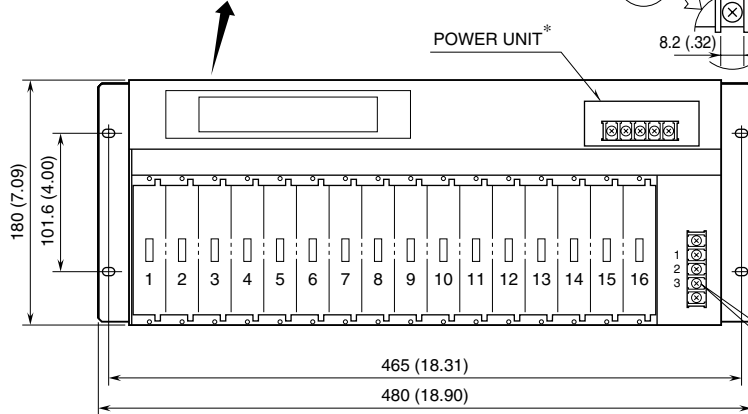
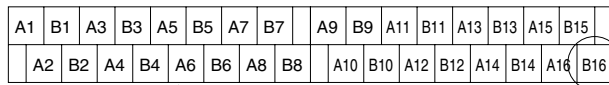
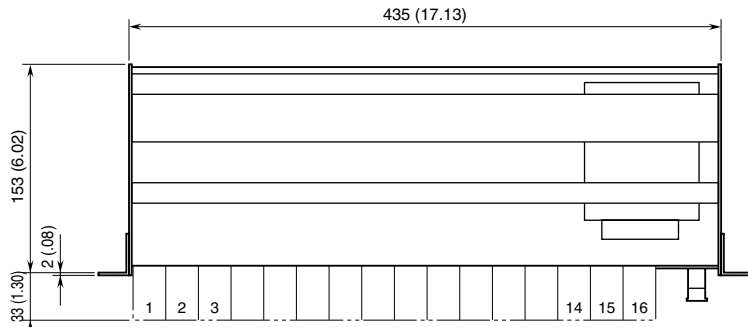
Observe an appropriate wiring space below.
*100 (3.94) for JIS standard

TERMINAL CONNECTIONS

Connect the unit as in the diagram below.

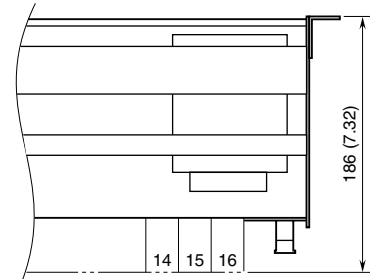
EXTERNAL DIMENSIONS unit: mm (inch)

● RACK (standard)

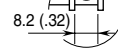


*Not provided for 24V DC power.

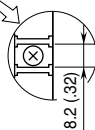
● SURFACE (option /W)



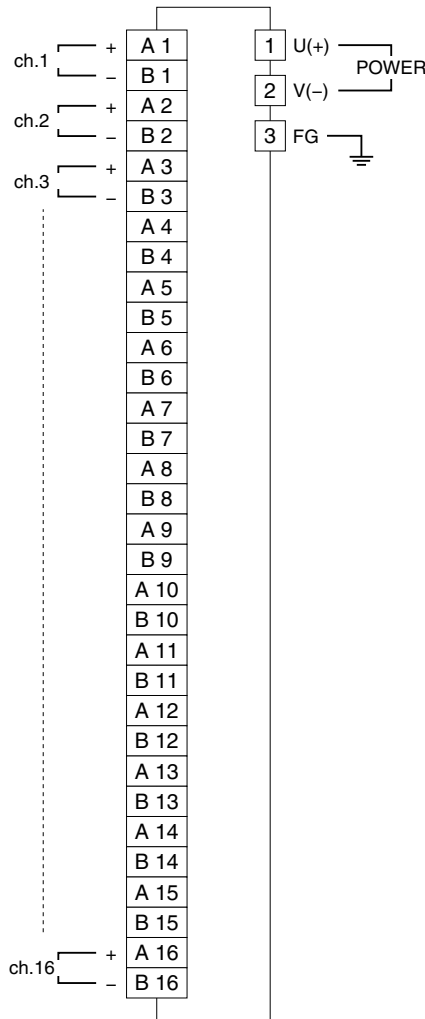
32-M3.5 OUTPUT TERMINAL



3-M4 POWER TERMINAL



CONNECTION DIAGRAM



WIRING INSTRUCTIONS

■ M4 Screw (power input, power unit)

Torque: 0.8 N·m

■ M3.5 Screw (output)

Torque: 0.8 N·m

CHECKING

- 1) Terminal wiring: Check that all cables are correctly connected according to the connection diagram.
- 2) Power input voltage: Check voltage across the power terminals.
- 3) Installation & environment

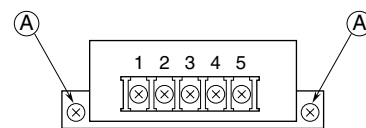
MAINTENANCE

Model HDC4-x-R is available as spare part to replace the AC power unit.

Power units' standard life is expected for 10 years with average ambient temperature 35°C (95°F) and 1.0A load. Contact us for use in extremely different conditions.

■ HOW TO REPLACE THE POWER UNIT

- 1) Prepare Power Unit (switching regulator) model HDC4-x-R.
- 2) Turn off the power supply connected to the Power Unit.
- 3) Remove the wire binding and wiring connected to the terminal 1 – 2 and 4 – 5.
- 4) Loosen and remove the mounting screws **A** (2 places).
- 5) Detach the Power Unit from the Rack.
- 6) Attach the new Power Unit to the Rack and tighten the screws in reverse order as explained above. The tightening torque of the mounting screws **A** is 0.8 N·m.



- A : Mounting screws
 1 : 24V DC (+)
 2 : 24V DC (-)
 3 : FG
 4 : AC power (V)
 5 : AC power (U)

LIGHTNING SURGE PROTECTION

We offer a series of lightning surge protector for protection against induced lightning surges. Please contact us to choose appropriate models.