

**USB INTERFACE BELL202 MODEM  
MODEL: COP-HU**

**DRIVER INSTALLATION MANUAL**

## CONTENTS

|   |          |
|---|----------|
| <b>1. INTRODUCTION .....</b>  | <b>3</b> |
| 1.1 OUTLINE .....   | 3        |
| 1.2 PC REQUIREMENTS.....  | 3        |
| <b>2. SETUP .....</b>   | <b>4</b> |
| 2.1 INSTALLATION.....   | 4        |
| 2.2 UNINSTALLATION.....   | 5        |
| 2.3 HOW TO MAKE YOUR PC RECOGNIZE COP-HU VIA USB PORT .....         | 5        |
| 2.3.1 FOR Windows 10 / Windows 8.1 / Windows 7 / Windows Vista..... | 5        |
| 2.3.2 FOR Windows XP.....   | 5        |
| 2.4 HOW TO CHANGE COM PORT NUMBER.....                              | 7        |
| 2.4.1 FOR Windows 10 / Windows 8.1 / Windows 7 / Windows Vista..... | 7        |
| 2.4.2 FOR Windows XP .....  | 8        |

# 1. INTRODUCTION

## 1.1 OUTLINE

This user's manual provides the necessary information and describes the procedures for connecting successfully some of our products to a PC by HART communication using this USB device. Please refer to the following steps for a proper use of COP-HU (hereafter called as "device").

- Installation of the device driver in your PC
- Device connection to the USB port of your PC

## 1.2 PC REQUIREMENTS

The information and procedures provided in this guide are only operative with the following systems.

|    |  |
|----|--|
| PC | Compatible with IBM PC   |
| OS | Windows XP Service Pack 3<br>Windows Vista (32 bit) Service Pack 1<br>Windows 7 (32 bit / 64 bit)<br>Windows 8.1 (32 bit / 64 bit)<br>Windows 10 (32 bit / 64 bit)<br>Note: The software may not function in certain conditions. |

## 2. SETUP

### 2.1 INSTALLATION

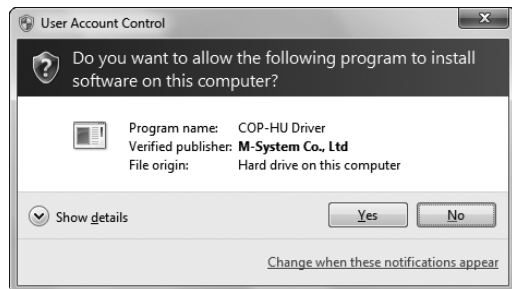
For using this device it is necessary to install the driver software in your PC. You can find it in the attached CD or at our web site.

When the driver software is compressed, decompress it and execute “setup.exe.” Then follow the instruction in order to complete the installation.

Note: Make sure device is not connected to USB port of your PC during the installation.

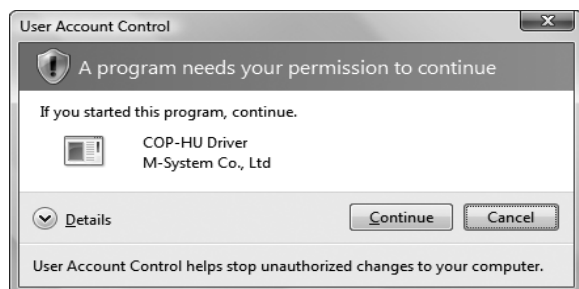
Windows Administrator account rights are required in order to install the driver software. When the following dialog appears, click on [Allow] to continue with the installation.

#### ■ For Windows 10 / Windows 8.1 / Windows 7



Click on [Yes]

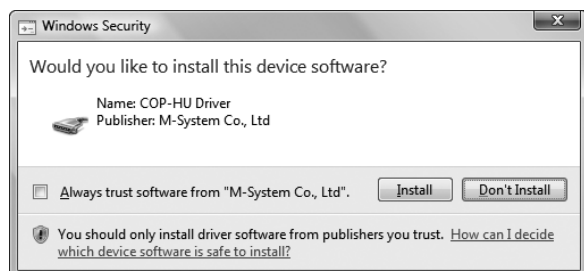
#### ■ For Windows Vista



Click on [Continue]

During the installation, dialogs as the following will be displayed. This is the Microsoft software verification dialog. We have verified the software, so click on “Install this driver software anyway.”

#### ■ For Windows 10 / Windows 8.1 / Windows 7 / Windows Vista



Click on [Install].

## ■ For Windows XP



Click on [Continue Anyway].

## 2.2 UNINSTALLATION

If you finished using COP-HU and you want to delete the driver from your computer, uninstall it.

For uninstalling, do it from the “Add/Remove Programs” on your Windows “Control Panel.” (For Windows XP, from the “Add or Remove Programs”). Select COP-HU DriverX.X. (X.X is the version number) and click “Remove.”

## 2.3 HOW TO MAKE YOUR PC RECOGNIZE COP-HU VIA USB PORT

Windows recognizes the device connecting it to the USB port of your computer after installing the driver software and installs it automatically.

Note: We recommend connecting always the device in the same USB port. Once the PC has recognized the device allocation on a selected port, an error might occur if it is connected to a different USB port.

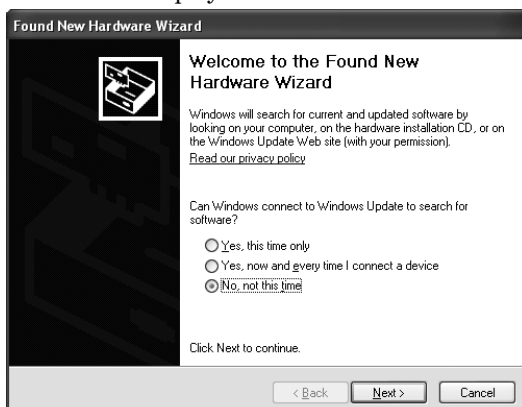
### 2.3.1 FOR Windows 10 / Windows 8.1 / Windows 7 / Windows Vista

For Windows 7 or Windows Vista, connecting the device to the USB port, balloon tips as follows is displayed in the bottom right of the screen, then it becomes able to be used automatically.



### 2.3.2 FOR Windows XP

Windows XP displays the “Found New Hardware Wizard” automatically. Follow the steps below to make the device operative.



1. Click on [No, not this time].
2. Click on [Next].



3. Click on [Install the software automatically (Recommended)].
4. Click on [Next].



5. Click on [Continue Anyway].

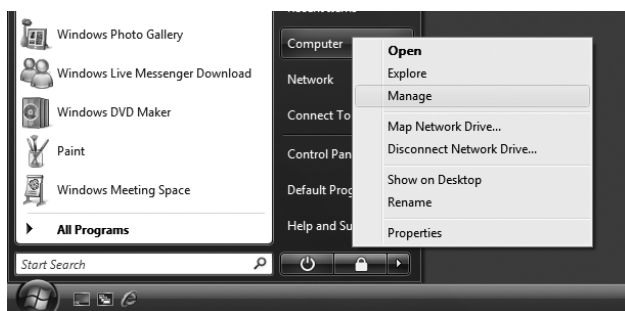


6. Click on [Finish].

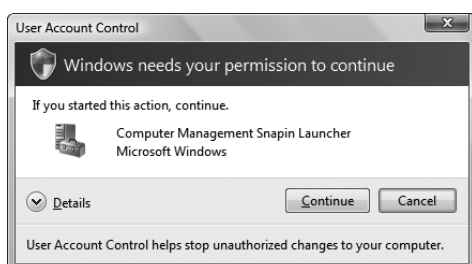
## 2.4 HOW TO CHANGE COM PORT NUMBER

The device is allocated automatically in the COM port that is available. Referring to this, configuration is changeable.

### 2.4.1 FOR Windows 10 / Windows 8.1 / Windows 7 / Windows Vista

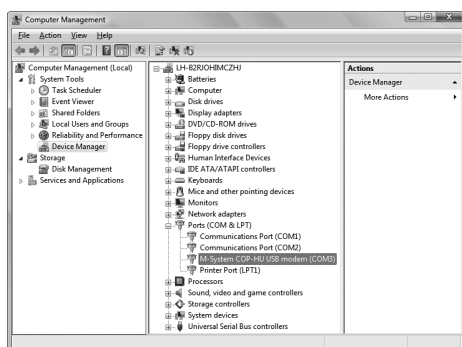


1. Click on [Start].
2. Click on [Computer].
3. Click on [Manage].

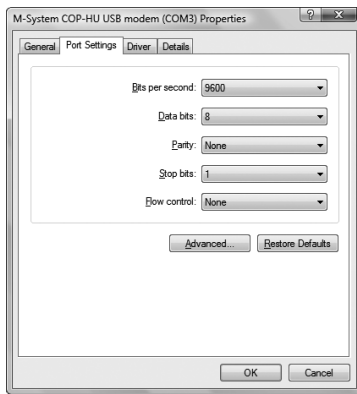


4. Click on [Continue].

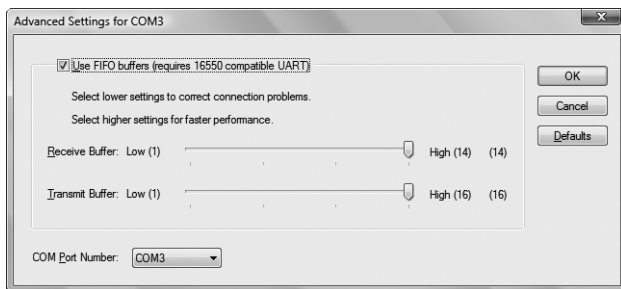
This screen is not displayed depending on the OS setting. In that case, skip this step.



5. Click on [Device Manager].
6. Click on [Ports (COM & LPT)].
7. Double click on [M-System COP-HU USB modem]

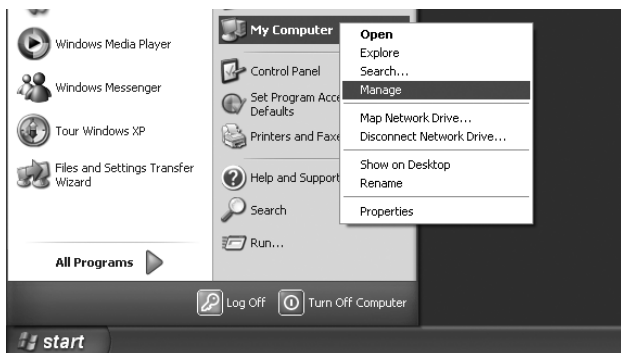


8. Click on [Port Settings].
9. Click on [Advanced].



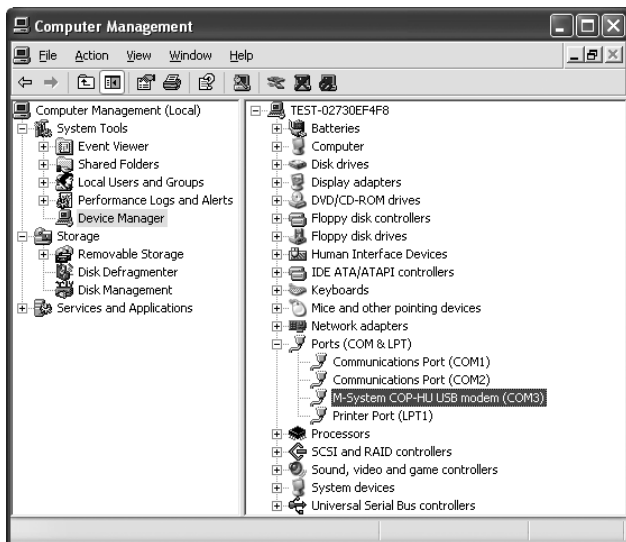
10. In [COM Port Number] you can change the COM port allocation number.
11. Clicking on [OK] the changes will be operative.

#### 2.4.2 FOR Windows XP

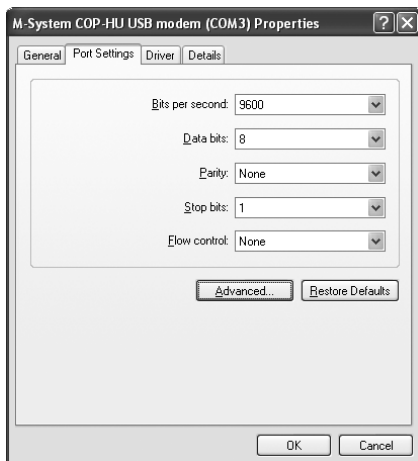


1. Click on [Start].
2. Click on [My Computer].
3. Click on [Manage].

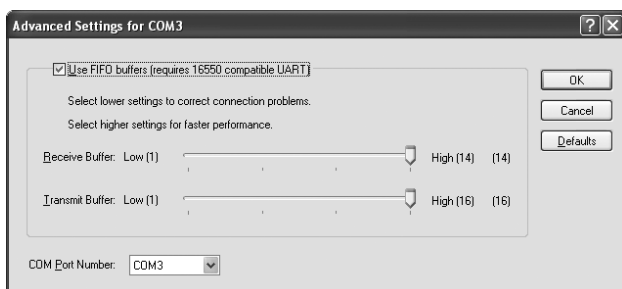




4. Click on [Device Manager].
5. Click on [Ports (COM & LPT)].
6. Double click on [M-System COP-HU USB modem].



7. Click on [Port Settings].
8. Click on [Advanced].



9. In [COM Port Number] you can change the COM port allocation number.
10. Clicking on [OK] the changes will be operative.