

STRAIN GAUGE LOAD CELL
(Beam type)MODEL **LCB-100****BEFORE USE**

Thank you for choosing us. Before use, please check contents of the package you received as outlined below.

If you have any problems or questions with the product, please contact our sales office or representatives.

■ PACKAGE INCLUDES:

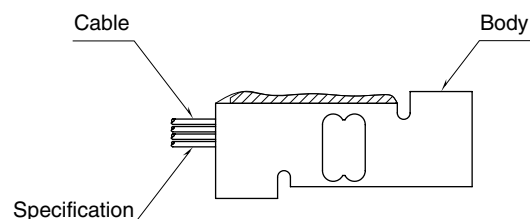
Strain gauge load cell(1)

■ MODEL NO.

Confirm Model No. marking on the product to be exactly what you ordered.

■ INSTRUCTION MANUAL

This manual describes necessary points of caution when you use this product, including installation, connection and basic maintenance procedures.

COMPONENT IDENTIFICATION**POINTS OF CAUTION****■ GENERAL PRECAUTIONS**

- Before you remove the unit or mount it, turn off the I/O signal for safety.

■ ENVIRONMENT

- Indoor use.
- Do not install the unit where it is subjected to continuous vibration. Do not subject the unit to physical impact.
- Environmental temperature must be within -10 to +60°C (14 to 140°F) with relative humidity under 85% RH in order to ensure adequate life span and operation.
- Use the unit within the range of rated capacity in order to avoid overload.

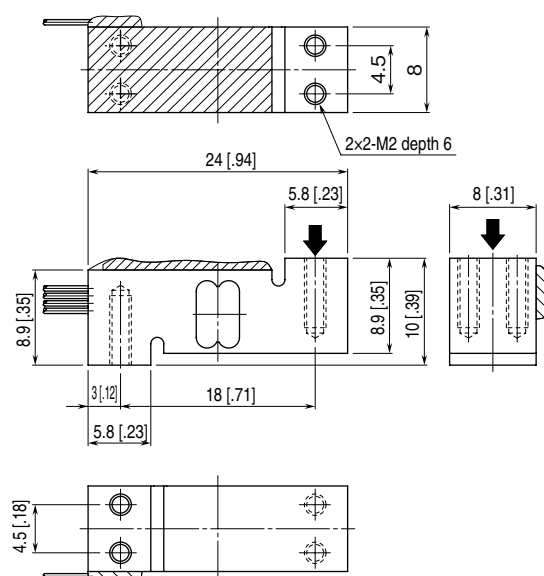
■ WIRING

- Do not install cables close to noise sources (relay drive cable, high frequency line, etc.).
- Do not bind these cables together with those in which noises are present. Do not install them in the same duct.

TERMINAL CONNECTIONS

Connect the unit as in the diagram below.

■ EXTERNAL DIMENSIONS unit: mm [inch]



• WIRING COLOR

ITEM	COLOR
Excitation voltage +	Red
Excitation voltage -	White
Output signal +	Green
Output signal -	Blue

LIGHTNING SURGE PROTECTION

We offer a series of lightning surge protector for protection against induced lightning surges. Please contact us to choose appropriate models.