

JUNCTION BOX

MODEL **LCBX-1****BEFORE USE**

Thank you for choosing us. Before use, please check contents of the package you received as outlined below.

If you have any problems or questions with the product, please contact our sales office or representatives.

■ PACKAGE INCLUDES:

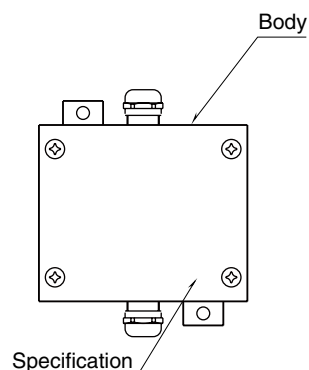
Junction box(1)

■ MODEL NO.

Confirm Model No. marking on the product to be exactly what you ordered.

■ INSTRUCTION MANUAL

This manual describes necessary points of caution when you use this product, including installation and connection.

COMPONENT IDENTIFICATION**POINTS OF CAUTION****■ GENERAL PRECAUTIONS**

- Before you remove the device or mount it, turn off the I/O signal for safety.

■ ENVIRONMENT

- Indoor use.
- Do not install the device where it is subjected to continuous vibration. Do not subject the device to physical impact.
- Environmental temperature must be within -10 to +75°C (14 to 167°F) in order to ensure adequate life span and operation.

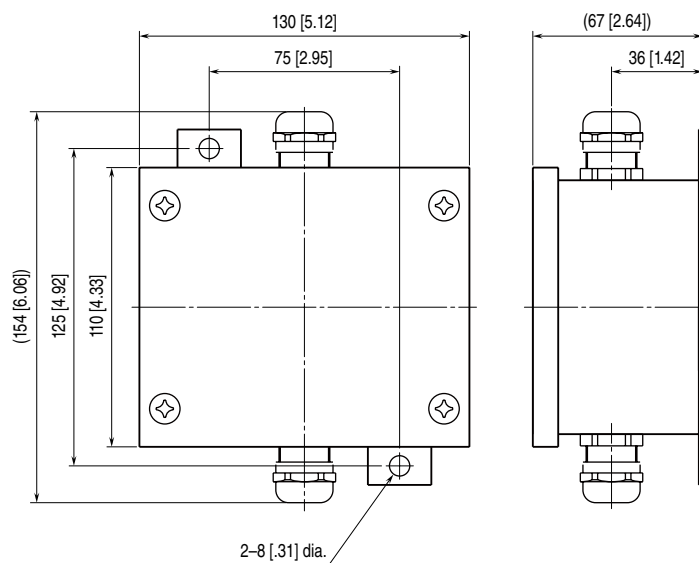
■ WIRING

- Do not install cables close to noise sources (relay drive cable, high frequency line, etc.).
- Do not bind these cables together with those in which noises are present. Do not install them in the same duct.

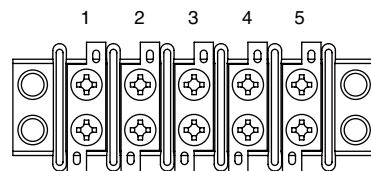
TERMINAL CONNECTIONS

Connect the device as in the diagram below.

EXTERNAL DIMENSIONS unit: mm [inch]



INTERNAL TERMINAL ASSIGNMENT



NO.	TERMINAL	SIGNAL
1	+ EXC	Excitation voltage (+)
2	- EXC	Excitation voltage (-)
3	+ SIG	Output signal (+)
4	- SIG	Output signal (-)
5	SHLD	Shield