

INSTALLATION BASE	MODEL M2BS2
--------------------------	--------------------

BEFORE USE

Thank you for choosing us. Before use, please check contents of the package you received as outlined below. If you have any problems or questions with the product, please contact our sales office or representatives.

■ PACKAGE INCLUDES:

Installation base.....(1)

■ MODEL NO.

Confirm Model No. marking on the product to be exactly what you ordered.

■ INSTRUCTION MANUAL

This manual describes necessary points of caution when you use this product, including installation, connection and basic maintenance procedures.

POINTS OF CAUTION

■ POWER INPUT RATING & OPERATIONAL RANGE

- Refer to signal conditioner data sheet. Choose the same power input specification for all units.

■ GENERAL PRECAUTIONS

- Before you remove the unit from the base or mount it, turn off the power supply and input signal for safety.

■ ENVIRONMENT

- Indoor use.
- When heavy dust or metal particles are present in the air, install the installation base inside proper housing and ventilate it.
- Do not install the unit where it is subjected to continuous vibration. Do not subject the unit to physical impact.
- Environmental temperature must be within -5 to +55°C (23 to 131°F) with relative humidity within 30 to 90% RH in order to ensure adequate life span and operation.
- Be sure that the ventilation slits are not covered with cables, etc.

■ WIRING

- Do not install cables close to noise sources (relay drive cable, high frequency line, etc.).
- Do not bind these cables together with those in which noises are present. Do not install them in the same duct.

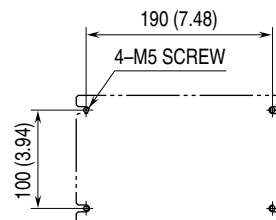
COMPONENT IDENTIFICATION

■ REAR VIEW

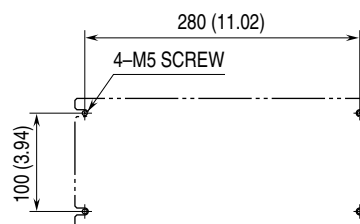


MOUNTING REQUIREMENTS unit: mm (inch)

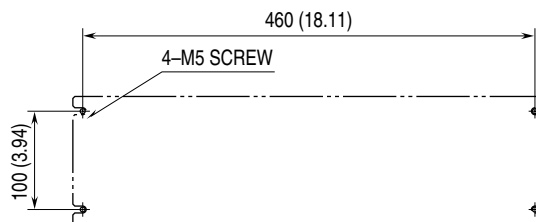
■ M2BS2-04



■ M2BS2-08



■ M2BS2-16

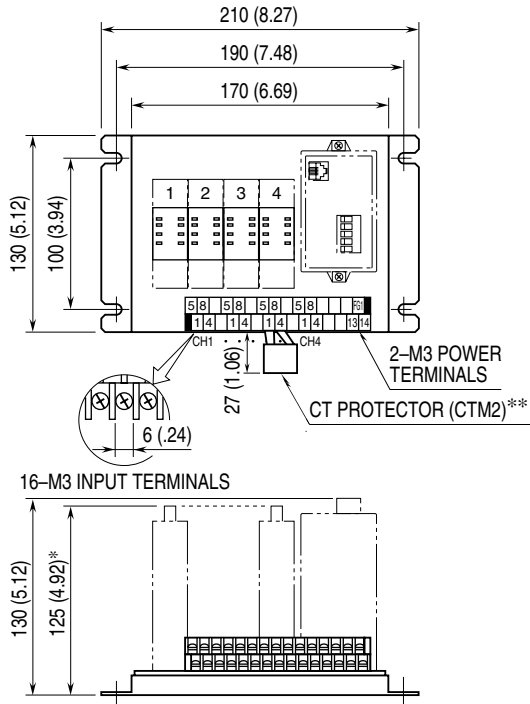


TERMINAL CONNECTIONS

Connect the unit as in the diagram below.

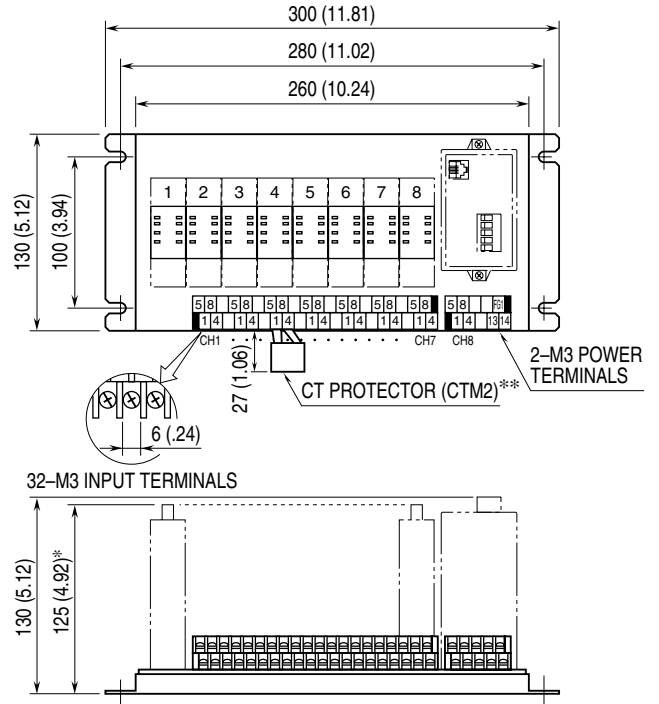
EXTERNAL DIMENSIONS unit: mm (inch)

• M2BS2-041 (INPUT BASE)



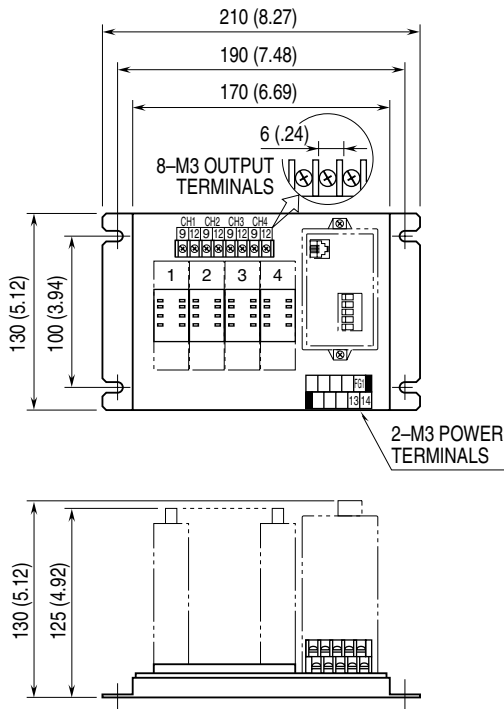
* 165 (6.50) required for pneumatic tubing for M2PV.
** Attached to M2CA and M2CE.

• M2BS2-081 (INPUT BASE)

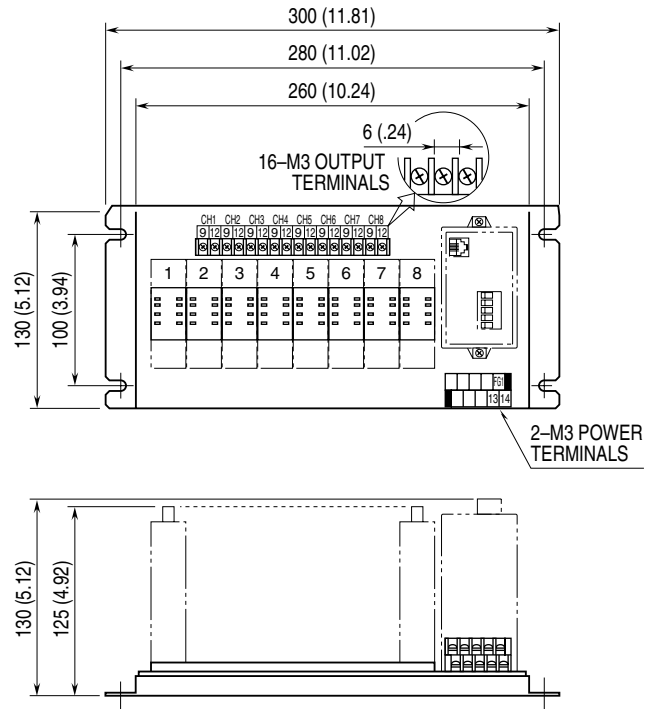


* 165 (6.50) required for pneumatic tubing for M2PV.
** Attached to M2CA and M2CE.

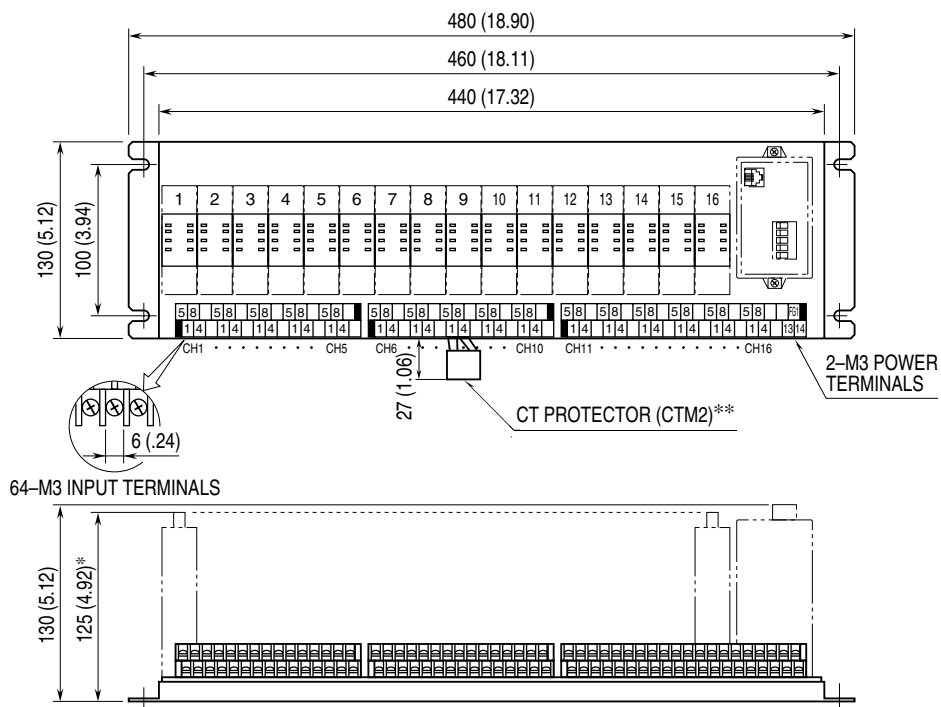
• M2BS2-042 (OUTPUT BASE)



• M2BS2-082 (OUTPUT BASE)



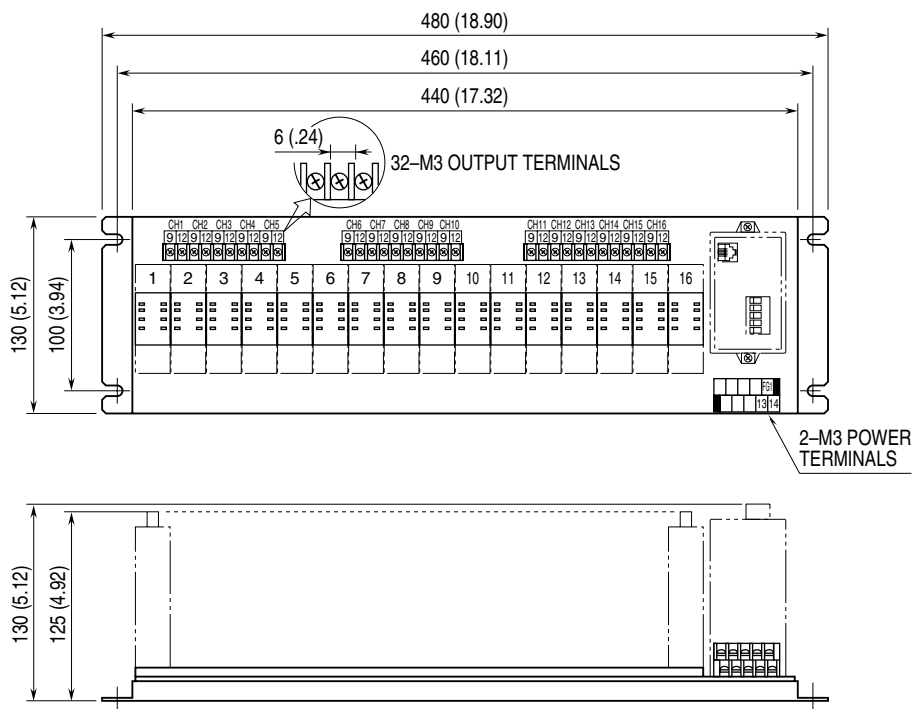
• M2BS2-161 (INPUT BASE)



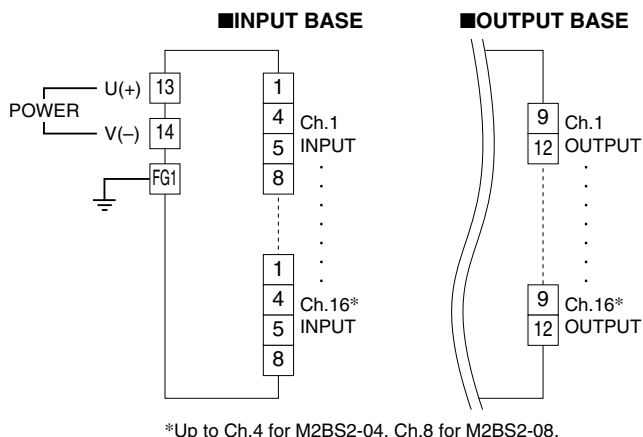
* 165 (6.50) required for pneumatic tubing for M2PV.

** Attached to M2CA and M2CE.

• M2BS2-162 (OUTPUT BASE)



CONNECTION DIAGRAM



WIRING INSTRUCTIONS

SCREW TERMINAL

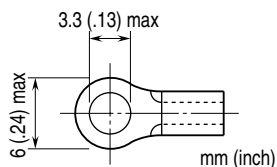
Torque: 0.8 N·m

SOLDERLESS TERMINAL

Refer to the drawing below for recommended ring tongue terminal size. Spade tongue type is also applicable.

Applicable wire size: 0.25 to 1.65 mm² (AWG 22 to 16)

Recommended manufacturer: Japan Solderless Terminal MFG.Co.Ltd, Nichifu Co.,ltd



CHECKING

- 1) Terminal wiring: Check that all cables are correctly connected according to the connection diagrams of the installation base and the mounted signal conditioners.
- 2) Power input voltage
- 3) Installation & environments

LIGHTNING SURGE PROTECTION

We offer a series of lightning surge protector for protection against induced lightning surges. Please contact us to choose appropriate models.