

Dual Channel Input/Output Isolators 15-RACK

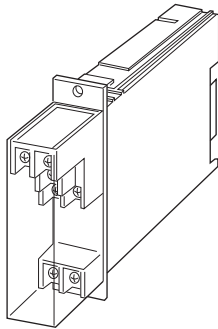
INPUT LOOP POWERED ISOLATOR

Functions & Features

- Loop-powered design eliminates output loop power supply
- 500 V DC input-to-output isolation
- 2 channels available; accomplishing economical and space-saving multi-input processing

Typical Applications

- Isolation between control room and field instrumentation, between telemetering system and input device
- Eliminates ground problems in existing systems thanks to easiness of application without requiring additional power wiring



MODEL: 15SN-A6[1]

ORDERING INFORMATION

- Code number: 15SN-A6[1]
- Specify a code from below for [1].
- (e.g. 15SN-A6/Q)
 - Specify the specification for option code /Q (e.g. /C01)

INPUT

Current
A: 4 - 20 mA DC

OUTPUT

Voltage
6: 1 - 5 V DC

[1] OPTIONS

blank: none
/Q: With options (specify the specification)

SPECIFICATIONS OF OPTION: Q

COATING (For the detail, refer to our web site.)
/C01: Silicone coating
/C02: Polyurethane coating
/C03: Rubber coating

GENERAL SPECIFICATIONS

Construction: Rack-mounted; terminal access via screw terminals at the front and via card-edge connector at the rear; terminal cover provided

Connection

Input: M3.5 screw terminals (torque 0.8 N·m)
Output: Card-edge connector and M3.5 screw terminals (torque 0.8 N·m)
Screw terminal: Nickel-plated steel
Housing material: Flame-resistant resin (black)
Isolation: Input to output

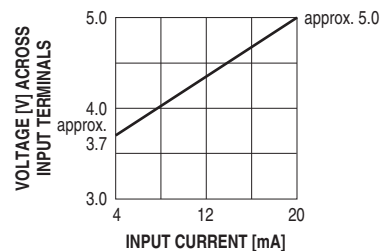
INPUT & OUTPUT

Equivalent input impedance: Approx. 250 Ω with 20 mA input

Operational range: 3 - 22 mA DC
 (Accuracy is assured within 4 - 22 mA)

Load resistance: 50kΩ minimum

• INPUT 4 - 20 mA DC / OUTPUT 1 - 5 V DC



INSTALLATION

Operating temperature: -5 to +55°C (23 to 131°F)
Operating humidity: 30 to 90 %RH (non-condensing)
Mounting: Standard Rack 15BX
Weight: 200 g (0.44 lb)

PERFORMANCE in percentage of span

Accuracy: $\pm 0.1\%$

Temp. coefficient: $\pm 0.015\%/^{\circ}\text{C}$ ($\pm 0.008\%/^{\circ}\text{F}$)

Response time: ≤ 0.5 sec. (0 - 90 %)

Insulation resistance: $\geq 100\text{ M}\Omega$ with 500 V DC

Dielectric strength: 500 V AC @ 1 minute

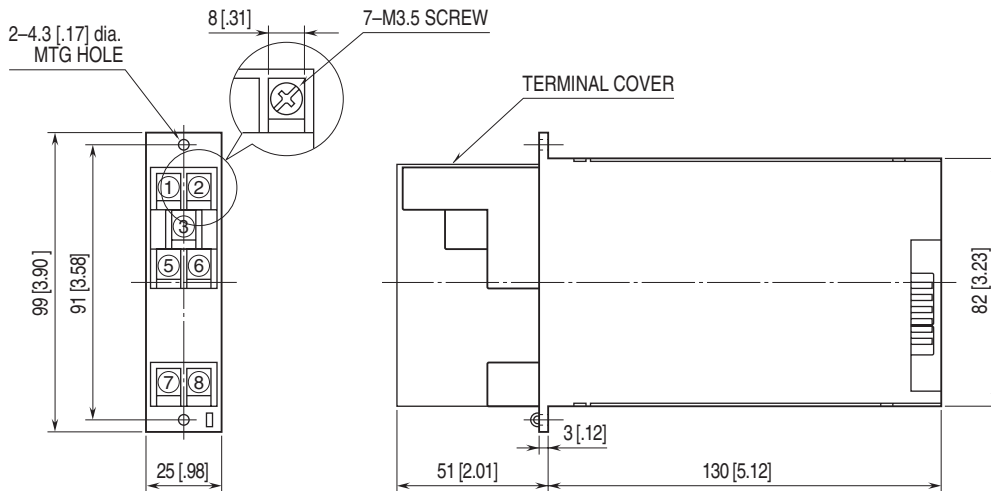
(input to output)

1500 V AC @ 1 minute

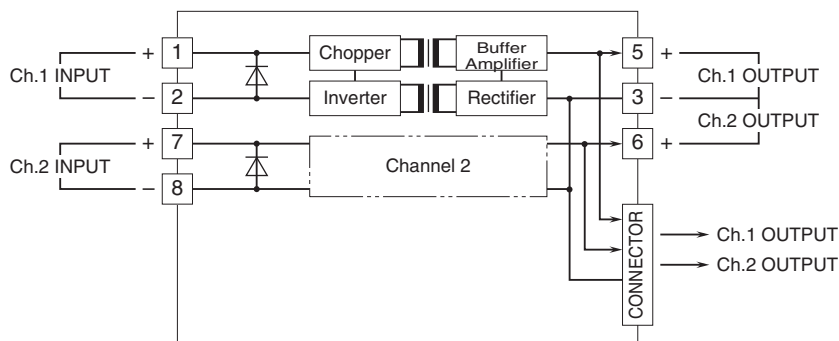
(input or output to ground)

1500 V AC @1 minute (ch.1 to ch.2 input)

EXTERNAL DIMENSIONS & TERMINAL ASSIGNMENTS unit: mm [inch]



SCHEMATIC CIRCUITRY & CONNECTION DIAGRAM



Specifications are subject to change without notice.