

DCS Input/Output Relay Card Series

MOTOR DRIVE I/O RELAY CARD

Functions & Features

- Input and output on one card
- Output ON/OFF switch and LED indicating relay status
- Output current capacity 3 A

MODEL: 38N2-3

ORDERING INFORMATION

- Code number: 38N2-3

INPUT

Dry contact or open collector

OUTPUT

Relay contact

FUNCTION

3: Motor drive use

RELATED PRODUCTS

- Standard Rack (model: 38N-B)

GENERAL SPECIFICATIONS

Construction: Rack mounted; terminal access via screw terminals at the front and via connector at the rear

Connection

Feedback input: M3.5 screw terminals (torque 0.8 N·m)

DCS I/O: Card-edge connector

Motor drive output: M3.5 screw terminals (torque 0.8 N·m)

Power input: Supplied from card-edge connector

Screw terminal: Nickel-plated steel

Isolation: DCS output or power or feedback input to motor drive output to DCS input

Indicator LED: Orange LED turns on when the motor is started up.

Red LED turns on when the feedback input is turned on.

INPUT SPECIFICATIONS

■ **FEEDBACK INPUT:** Dry contact or open collector

Contact detecting: 24 V DC, approx. 35 mA

■ **DCS STATUS OUTPUT:** Dry contact or open collector

Contact detecting: 24 V DC, approx. 60 mA

OUTPUT SPECIFICATIONS

■ **MOTOR DRIVE OUTPUT:** Relay contact

Rated load: 250 V AC @ 3 A ($\cos \phi = 1$)

30 V DC @ 3 A (resistive load)

Relay protection: For maximum relay life with inductive loads (e.g. coil), external protection including noise quenching is recommended.

■ **DCS STATUS INPUT:** Relay contact

Rated load: 30 V DC @ 3 A (resistive load)

■ **RELAY LIFE:**

Mechanical life: 5×10^7 cycles

Electrical life: 10^5 cycles

(30 cycles/min. at rated load)

INSTALLATION

Power input

• **DC:** Operational voltage range 24 V $\pm 10\%$; ripple 10 % p-p max., approx. 95 mA

Operating temperature: -5 to +55°C (23 to 131°F)

Operating humidity: 30 to 90 %RH (non-condensing)

Mounting: Standard Rack 38N-B

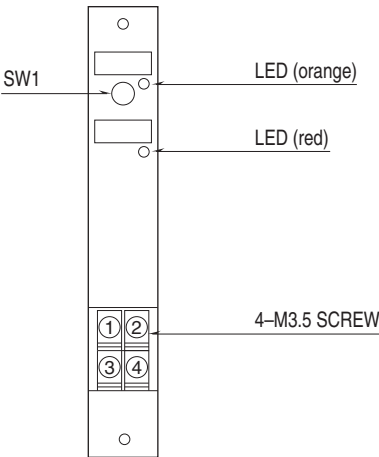
Weight: 150 g (0.33 lb)

PERFORMANCE

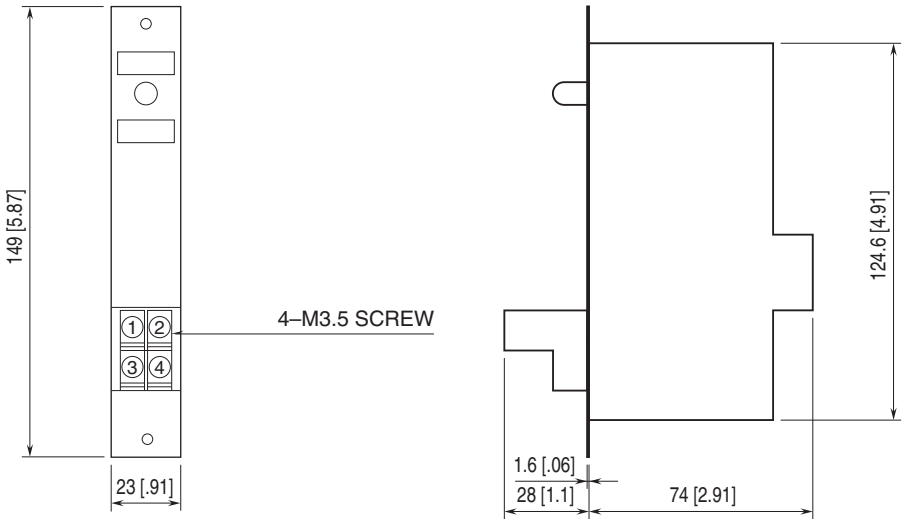
Insulation resistance: $\geq 100 \text{ M}\Omega$ with 500 V DC

Dielectric strength: 1000 V AC @ 1 minute (DCS output or power or feedback input to motor drive output to DCS input)

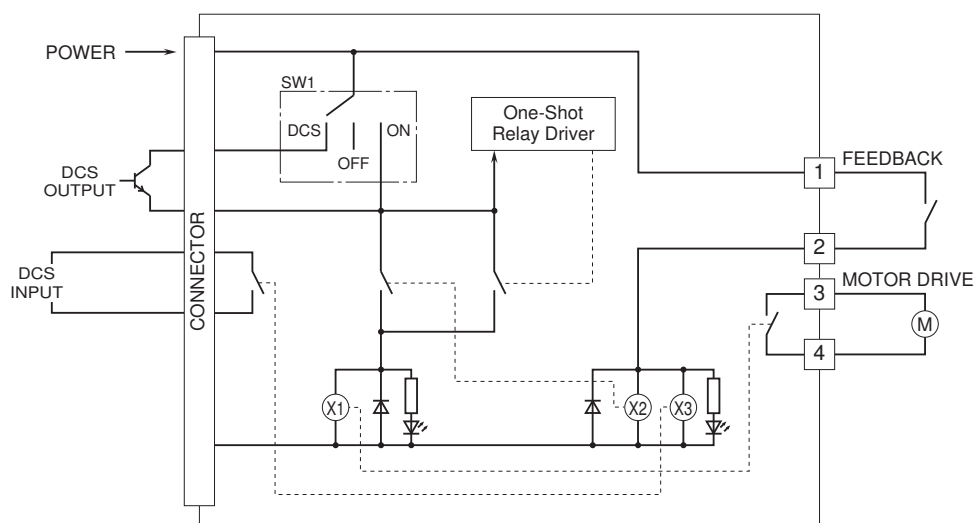
EXTERNAL VIEW



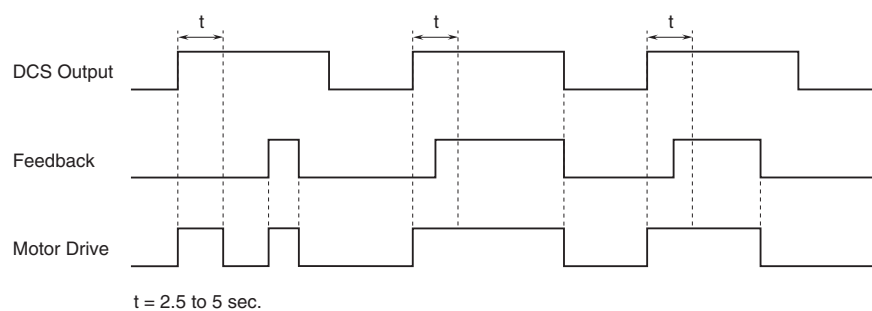
EXTERNAL DIMENSIONS & TERMINAL ASSIGNMENTS unit: mm [inch]



SCHEMATIC CIRCUITRY & CONNECTION DIAGRAM



OPERATION



Specifications are subject to change without notice.