

## SPECIAL CABLE

### MODEL: HDR40-[1]

#### ORDERING INFORMATION

- Code number: HDR40-[1]  
Specify a code from below for [1].  
(e.g. HDR40-20)

#### [1] CABLE LENGTH

- 05: Cable with connectors at both ends L = 50 cm (1.6 ft.)  
20: Cable with connectors at both ends L = 2 m (6.6 ft.)

#### RELATED PRODUCTS

- Digital panel meter (model: 47DAC, 47DM, 47DR, 47DT, 47DV)
- Connector terminal block (model: CNT)

#### GENERAL SPECIFICATIONS

##### Connector, Side A

- Connector model:** HDR-E50MAG1  
**Cover model:** HDR-E50LPA5

##### Connector, Side B

- Connector model:** OTAX N361J040AU  
(Fujitsu FCN-361J040-AU...discontinued)  
**Cover model:** OTAX N360C040B  
(Fujitsu FCN-360C040-B...discontinued)

**Cable:** Shielded cable with 40 core cables

#### PERFORMANCE

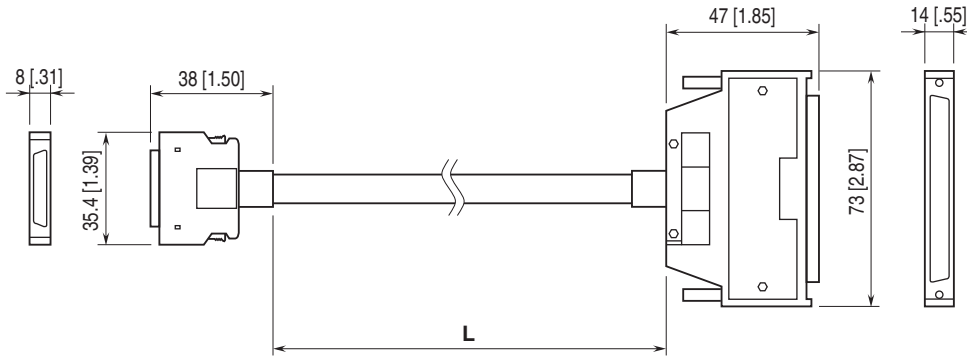
- Maximum current:** 0.2 A  
**Dielectric strength:** 250 V AC @ 1 minute

## EXTERNAL DIMENSIONS & CONNECTOR PIN ASSIGNMENT unit: mm [inch]

• Connector, Side A

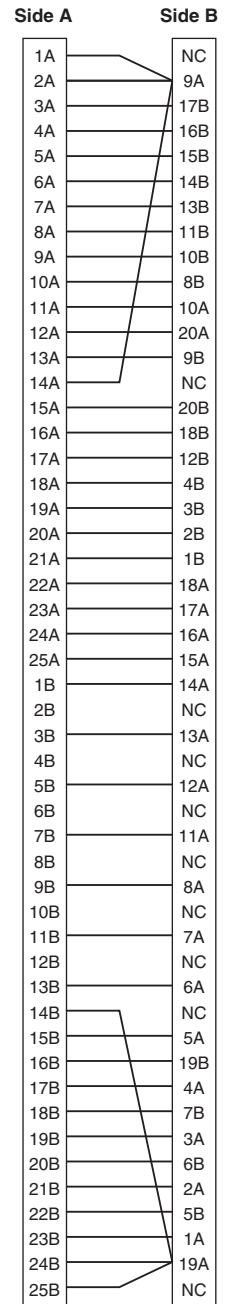
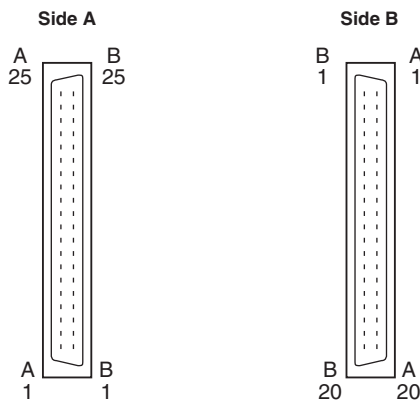
• Connector, Side B

■ WIRING DIAGRAM



	HDR40-05	HDR40-20
<b>L</b>	50 cm [19.7 in]	2 m [6.6 ft]

■ CONNECTOR PIN ASSIGNMENT



Specifications are subject to change without notice.