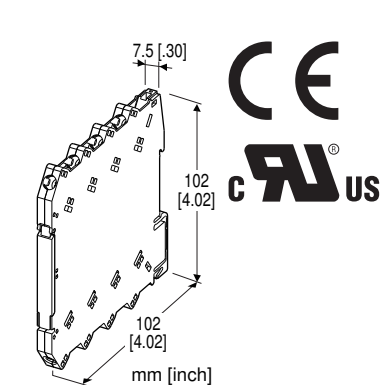


## Screw Terminal Ultra-Slim Signal Conditioners M6N Series

### POWER SUPPLY MODULE

#### Functions & Features

- Supplies power to the M6N modules mounted on the Installation Base
- High-density mounting
- Power indicator LED



### MODEL: M6NPS1-R[1]

### ORDERING INFORMATION

- Code number: M6NPS1-R[1]  
Specify a code from below for [1].  
(e.g. M6NPS1-R/UL/Q)
- Specify the specification for option code /Q  
(e.g. /C01)

### POWER INPUT

DC Power

R: 24 V DC

(Operational voltage range 22 - 27 V, ripple 10 %p-p max.)

### [1] OPTIONS (multiple selections)

Standards & Approvals

**blank:** CE marking

**/UL:** UL approval, CE marking

Other Options

**blank:** none

**/Q:** Option other than the above (specify the specification)

### SPECIFICATIONS OF OPTION: Q

COATING (For the detail, refer to our web site.)

**/C01:** Silicone coating

**/C02:** Polyurethane coating

### GENERAL SPECIFICATIONS

**Connection:** M3 screw terminal (torque 0.5 N·m)

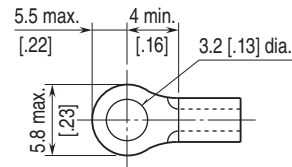
**Recommended solderless terminal:** Max. 5.8 mm (0.23") wide; Ones with insulation sleeve do not fit.

Applicable wire size: 0.2 - 2.5 mm<sup>2</sup>

**Housing material:** Flame-resistant resin (black)

**Power indicator LED:** Green LED turns on when the power is supplied.

■ Recommended solderless terminal (unit: mm [inch])



### INSTALLATION

**Power input:** 2 A (Total current consumed by signal conditioners on the base must be 2 A or less.)

**Operating temperature:** -20 to +55°C (-4 to +131°F)

**Operating humidity:** 30 to 90 %RH (non-condensing)

**Mounting:** Installation Base (model: M6NBS)

**Weight:** 60 g (2.1 oz)

### PERFORMANCE

**Insulation resistance:** ≥ 100 MΩ with 500 V DC

**Dielectric strength:** 2000 V AC @1 minute (power to ground)

### STANDARDS & APPROVALS

**EU conformity:**

EMC Directive

EMI EN 61000-6-4

EMS EN 61000-6-2

RoHS Directive

**Approval:**

UL/C-UL nonincendive Class I, Division 2,

Groups A, B, C, and D hazardous locations

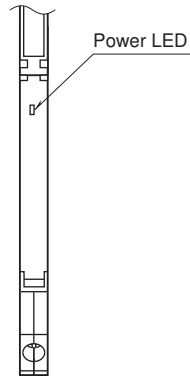
(ANSI/ISA-12.12.01, CAN/CSA-C22.2 No.213)

UL/C-UL general safety requirements

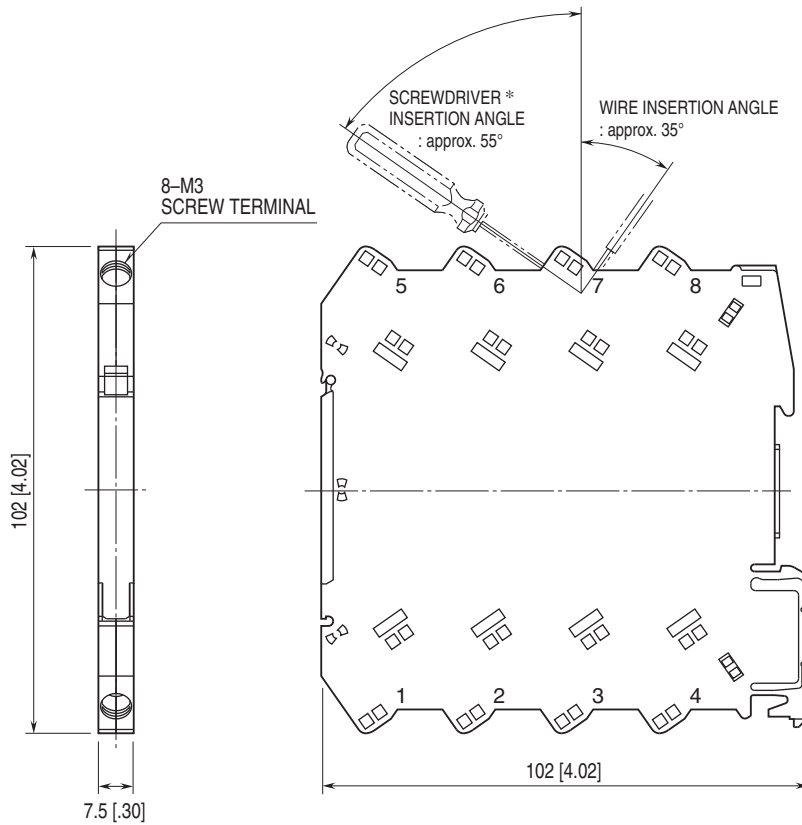
(UL 61010-1, CAN/CSA-C22.2 No.61010-1)

## EXTERNAL VIEW

(With the cover open)

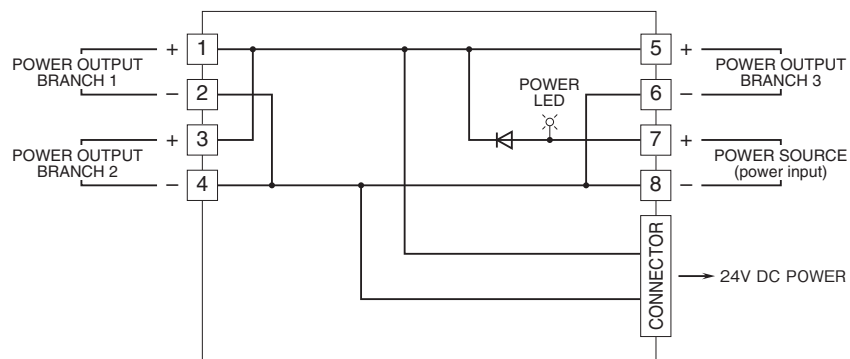


## EXTERNAL DIMENSIONS & TERMINAL ASSIGNMENTS unit: mm [inch]



\*Screwdriver stem diameter: 6 mm [.24"] or less

**SCHEMATIC CIRCUITRY & CONNECTION DIAGRAM**



Specifications are subject to change without notice.