

The "CLIPBOARD" is the e-mail newsletter from M-System.

It introduces to you new products, literature, product applications and other important information we pick up in our daily business correspondence with clients around the world.

Your comments, views and contribution are welcome.

I.N.S.I.D.E

Sales News

Application Notes

Product Info-1

Product Info-2

Product Info-3

Exhibition-1

Exhibition-2

Hotline News-1

Hotline News-2

TR30-G Tablet Recorder Sales Tools

DL8 Series application example

Parameter Generator, model ABS3

Model LSMT4, power supply code addition

New models added to

ultra-slim Digital Panel Meter 47NL Series

MECHATROLINK Fair 2016

Asia Monozukuri Conference

Manga Application Catalog (DL8)

I/O Solution Products 2016-2017

Sales News

TR30-G Tablet Recorder Sales Tools

– Product Flyer and Demo Site –

M-System's model TR30-G is a web-based data acquisition system which enables users to view and access stored data via an internet browser. Freed from a dedicated display screen, accessibility and portability of the data is greatly enhanced. In addition, users can receive free benefit of ever-evolving state-of-the-art user interface and apps provided by tablet terminals: i.g. ultra-high resolution screen, intuitive touch panel operations, entering comments by dictation or hand-writing, capturing a screen shot and e-mailing, etc.



model: TR30-G

■ Specification Sheet

Product Flyer PDF

Please download the Product Bulletin (flyer) at the web link below:

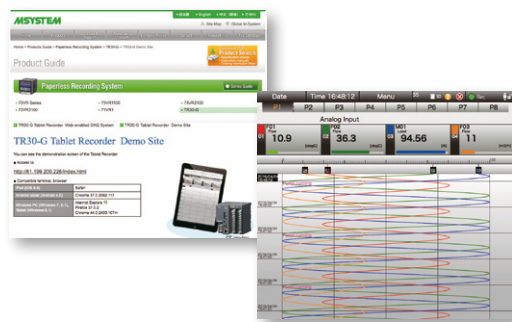
http://www.m-system.co.jp/literature_w/PB/PB_tr30_R2.pdf



TR30-G DEMO SITE

You can access web browser views of the TR30-G demo module set up in M-System's Kanto (Tokyo) Office.

- Switching the trend graph direction between "vertical" and "horizontal" by the selector button at the bottom of the Page Selector View
- Choosing a browser page on the Page Selector View
- Moving over web pages
- Check on the Menu
- Jumping to other views: Overview, New Event, Event Summary, Comment Summary, etc.



Click on [Demo Site] button on the TR30-G Tablet Recorder web site below:

http://www.m-system.co.jp/english/products/recorder/pa_tr30.html

DL8 Series application example

COMPRESSOR

Applicable Area : Equipment/Machines

Application : Maintenance of compressors

Once operation begins, compressors run 24 hours a day, 365 days a year. Proper maintenance during periodic inspections can keep performance consistent. The DL8 is used for collecting data from compressors. This data, in CSV files, is stored in the SD card located in the DL8 and during periodic inspections can be used to check for abnormalities in operation.

Data such as motor current, cooling water temperature, air pressure, and oil pressure is recorded so that preventive maintenance can be performed before trouble actually occurs.

Installation of a mobile router allows e-mails to be sent to the person in charge using a mobile phone line when temperature or pressure exceeds normal limits.

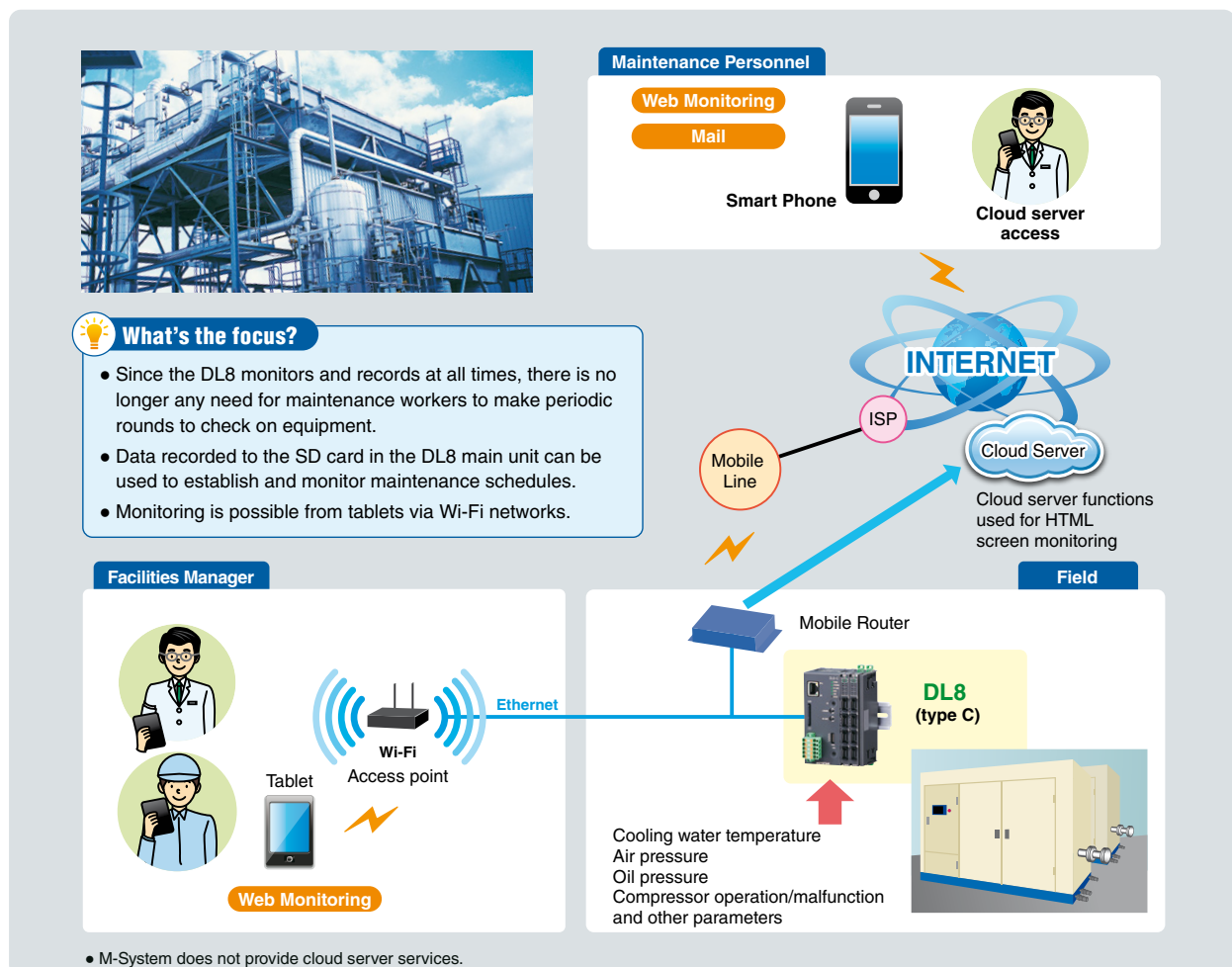
Monitoring from tablets use Wi-Fi access points.



model: DL8-C

Web-Enabled Remote Terminal Unit

■ Specification Sheet



- Web browsed views are images that are subject to change without notice.
- In order to effect the applications on this page, static IP or dynamic DNS is required.
- M-System Company does not provide smart phones and/or telecommunication services.ices.

Product Information -1

Parameter Generator, model ABS3

M-System's latest version panel mounted Parameter Generator, model ABS3, is now released.

This generator is very compact and has user friendly PV and SV displays. It is widely used for various parameter settings of computers and DCS's.

Highlights:

- 1/16 DIN size
- Process input monitor display
- All parameters are programmable via the front control keys
- Field-selectable voltage or current input/output
- IP66 front panel (when individually mounted)



model: ABS3

W48 × H48 × D92 mm
(1.89" × 1.89" × 3.62")

■ Specification Sheet



Product Information -2

Model LSMT4, power supply code addition, 24V & 48V

Users will be able to use M-System's Multi Power Transducer, model LSMT4, with DC power code -R (24V) or code -V (48V) in the near future. The LSMT4, now works has a universal 100-240V AC or 110-240V DC auxiliary power supply, or -AD4 power input selection. In order to be used with additional power supply types, we will soon add 24V DC and 48V DC power input.



model: LSMT4

W125 × H140 × D116 mm
(4.92" × 5.51" × 4.57")

■ Specification Sheet



Products Information -3

New models added to ultra-slim Digital Panel Meter 47NL Series

Current Loop Supply model 47NLDY, 47NLDT are newly released.

Model	Function	Connection	Spec
47NLV	DC input type	Tension-clamp terminal block connection	
47NLVT		Screw terminal block connection	
47NLN	Loop Powered (No external power source needed)	Tension-clamp terminal block connection	
47NLNT		Screw terminal block connection	
47NLR	RTD input type	Tension-clamp terminal block connection	
47NLRT		Screw terminal block connection	
47NLDY	Current Loop Supply	Tension-clamp terminal block connection	
47NLDT		Screw terminal block connection	

■ Connection Diagram Example



model: 47NLDT

W96 × H48 × D20 mm
(3.78" × 1.89" × 0.79")

■ Specification Sheet



model: 47NLDT

W96 × H48 × D48.5* mm
(3.78" × 1.89" × 1.91")

* Panel thickness not included.

■ Specification Sheet



MECHATROLINK Fair 2016 (Singapore, Kuala Lumpur, Penang)

On March 14, 16 and 18 2016, M-System Singapore subsidiary company MGTEC ASIA participated as a partner in the MECHATROLINK fair that was held in Singapore, Kuala Lumpur and Penang respectively. Over 260 attendees came for the three events, with the event held in Singapore attracting the most attendees.

The fair's main purpose was to introduce as well as promote the Yaskawa's MECHATROLINK communication system and the various devices that supported the products.

MGTEC ASIA took the opportunity to introduce M-System, our company, our policies as well as our products to attendees of the exhibition. For the exhibition in Singapore, we focused on the R3 and R7 Remote I/O Series and DL8 Web Data Logger system. As we were certified to sell our Wireless Tower Light and LED Tube in Singapore as well, we also showcased these products to the attendees.

Due to the exposure of the exhibition, we immediately received enquiries on some of our products the day after the exhibition.

In Kuala Lumpur and Penang, many attendees' attention were caught by our interactive demo setup and there were many questions about how our Remote I/Os and Web Data Logger can be used.

All in all, it was a successful exhibition and we look forward to holding more to promote our company brand name and products in the future.



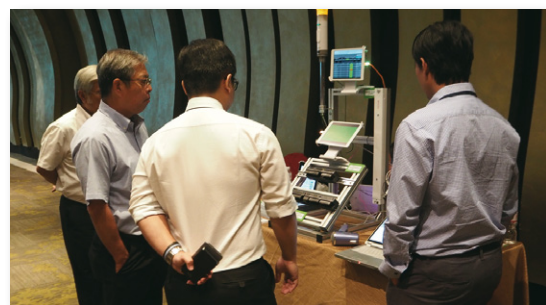
Singapore MECHATROLINK event



Interactive demo showcase



Presentation in Penang



Kuala Lumpur MECHATROLINK event

Exhibition -2

Asia Monozukuri Conference (India)

An international conference of Japanese Companies Promoting Japanese Products, was organized in a huge manner, at the ITC Grand Chola, Chennai, India on 15th March 2016.

The conference was inaugurated by His Excellency The Governor of Tamil Nadu who had presided over the conference and also supported by His Excellency The Consulate - General of Japan in Chennai - Mr. Seiji Baba. The conference was brightened with over 300 international delegates and VIP persons making their presence positively.

Delegates from M-System India, attended the conference and focused on promotion of Remote I/O Modules with MECHATROLINK communication protocol. These products were highlighted to the delegates at the conference, and received good product appreciation and positive response from the delegates & VIP attendees of the conference.

This Asia Monozukuri Conference 2016 had a very huge exposure in the local India market, with prominent speakers and well known industrialists from major industrial segments supporting in the promotion of MECHATROLINK communication protocol based systems, and its requirement for the India industry, for its wide applications.

The speakers have expressed their opinion on the joint vision of India and Japan on global peace, prosperity and mutual trust and responsibility.

The word “Monozukuri” in its basic terms means “Product Manufacturing”. “Mono” indicates “Product” and “Zukuri” indicates “Production or Manufacturing or Making”.

“Monozukuri” emphasizes on highest quality of product manufacturing with focus on value to the society and continuous innovation and creativity.

The Consulate General of Japan in Chennai and The Governor of Tamil Nadu, along with other VIP’s have expressed their positive opinion on the common cultures between India and Japan.

As the theme of the conference says “Create Innovation Together”, all the speakers emphasized on synergizing with being together and innovating with quality and value to the society.



Hotline News -1

Manga Application Catalog – DL8 Web Data Logger for IoT

The new catalog introduces a wide variety of monitoring applications of the DL8 Series with Manga (illustrations). Application examples are organized with 5 categories, “Abnormality Notification”, “Remote Monitoring/Operation”, “Predictive and Preventive Maintenance”, “Remaining Amount Management of Stored Liquids” and “Labor-Saving Maintenance”. They are shown by BEFORE and AFTER style which is easily understandable visually.

The catalog is available to download in PDF format. Also you can view it in e-book.

Product Catalog:

http://www.m-system.co.jp/literature_w/literature_w.html

For copies of it, please ask your M-System sales contact.



I/O Solution Products 2016-2017 Update

Updated I/O Solution Products will be printed and ready for distribution around early in May. New products such as 47NL Series Ultra-slim Digital Panel Meter, TR30-G Tablet Recorder, DL8-D Web Data Logger have been added. Also Wireless I/O System for IoT is newly introduced as application for Japanese market.

Again please ask your sales contact for copies.



NEWS LETTER TEAM'S CORNER



Tomomi Takewaki

takewaki@m-system.co.jp

Winter was gone and spring has come.

I visited Kyoto last week-end (27 March), and visited several sightseeing spots such as Yasaka Shrine, Maruyama Park and Kodai-ji temple.

It is a slightly too early to enjoy the cherry-blossom viewing, but already some cherry trees have bloomed.

You may know that you can enjoy flower viewing such as Cherry blossom, Azalea in spring many places in Japan.

Especially in cherry blossom season, many people enjoy a barbecue party under the cherry trees. It is a kind of seasonal tradition in Japan.

I love such seasonal traditions in spring, but an exception is hay fever (allergy to pollen).

I have been suffering from hay fever for more than 20 years.....



Satoka Kubo

skubo@m-system.co.jp

In Japan, we do Ohanami between late March and April. Ohanami means Cherry blossom viewing. At the beginning of March which is right before the season, the Japan Meteorological Agency issues cherry blossom forecasts every week.

Japanese people love cherry blossoms not only because they are beautiful but also because they only bloom for a very short period.

When it is good weather, we enjoy picnic with family and friends under the fully bloomed cherry blossoms. Sometimes people stay overnight at the park to get a good spot for cherry blossom viewing. Parks, temples, shrines are especially popular for the cherry blossoms viewing. Every spring, many parks get crowded with viewers. People enjoy Yozakura, the illuminated cherry blossom at night. I recommend you to see it because it is fantastic and very beautiful.



M-SYSTEM NEWSLETTER "CLIPBOARD"
No.206 April 2016

M-SYSTEM
M-SYSTEM CO., LTD.

URL www.m-system.com
E-mail info@m-system.co.jp

International Sales Department

5-2-55, Minamitsumori, Nishinari-ku, Osaka 557-0063 JAPAN
Tel: +81(6)6659-8201 Fax: +81(6)6659-8510