

The "CLIPBOARD" is the e-mail newsletter from M-System. It introduces to you new products, literature, product applications and other important information we pick up in our daily business correspondence with clients around the world. Your comments, views and contribution are welcome.

I·N·S·I·D·E	
Product Info	CC-Link Master Module dedicated for Yokogawa Electric PLC
Application Notes	DL8 Series application example
Seasonal greeting	New year greetings

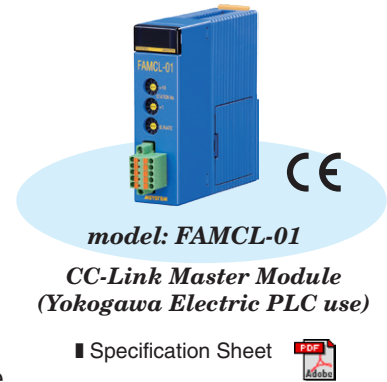
Product Information

CC-Link Master Module dedicated for Yokogawa Electric PLC has been released!

M-System has released CC-Link Master Module (model: FAMCL-01) dedicated for Yokogawa Electric PLC (FA-M3V).

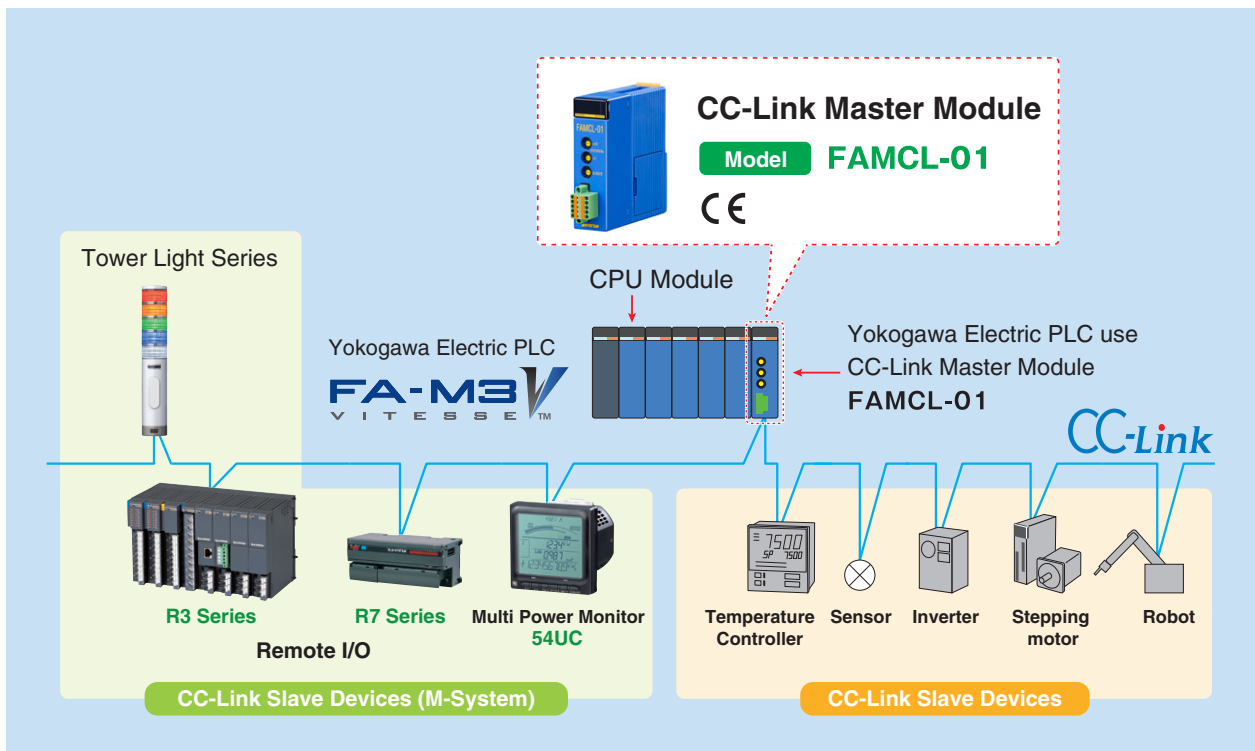
Features:

- Existing CC-Link slave stations can be connected.
- M-System's CC-Link Remote I/O can be added on the same network.
- Supporting CC-Link Remote I/O station and remote device station.
- Available for CSP+* which is useful for setting-up.
- Configuration can be done by PC via CPU module using dedicated configuration software (model: FAMCLCFG), downloadable from website.



* CSP+: CC-Link Family System Profile Plus

System Configuration Example

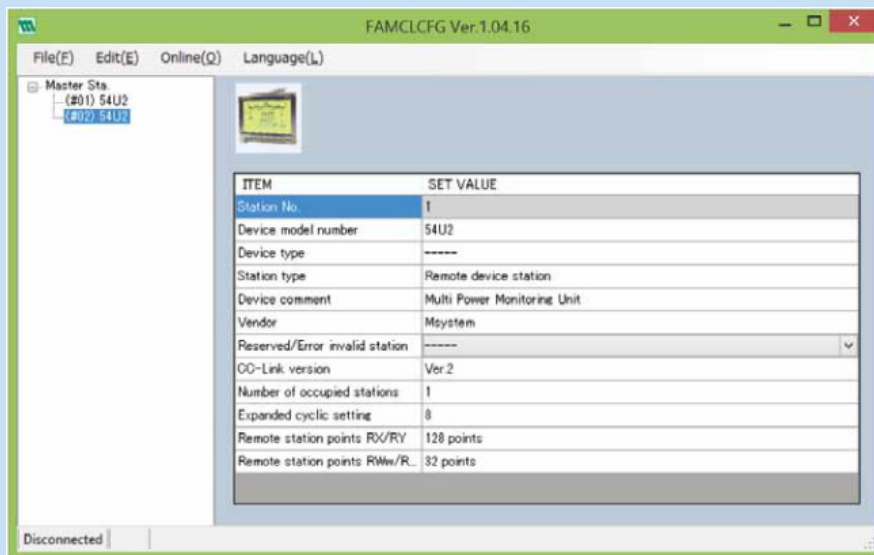


■ Configurator software (model: FAMCLCFG)

■ MASTER STATION



■ SLAVE STATION



BASIC VIEW

Application Notes

DL8 Series application example

PAPER MILL

Applicable Area : Factory production lines

Application : Flow Rate Signal Transmission at Paper Mill

There are many flow meters used at paper mills because they use a large amount of water.

Data from each flow meter is sent via the DL8 and managed at a central station.

Using the I/O Mapping function of the DL8-D series units allows the measurement signals of flow meters sent to the Remote I/O R3 Series to be output from a DL8 unit I/O card.

A Wi-Fi terminal can be used for wireless transfer of data from locations difficult to link via LAN cable.

A maximum of 32 measurement signals can be sent to one central location and output as a batch.

Output signals from the DL8 I/O modules are displayed by indicators of instrument panel.



model: DL8-D

Web-Enabled
Remote Terminal Unit

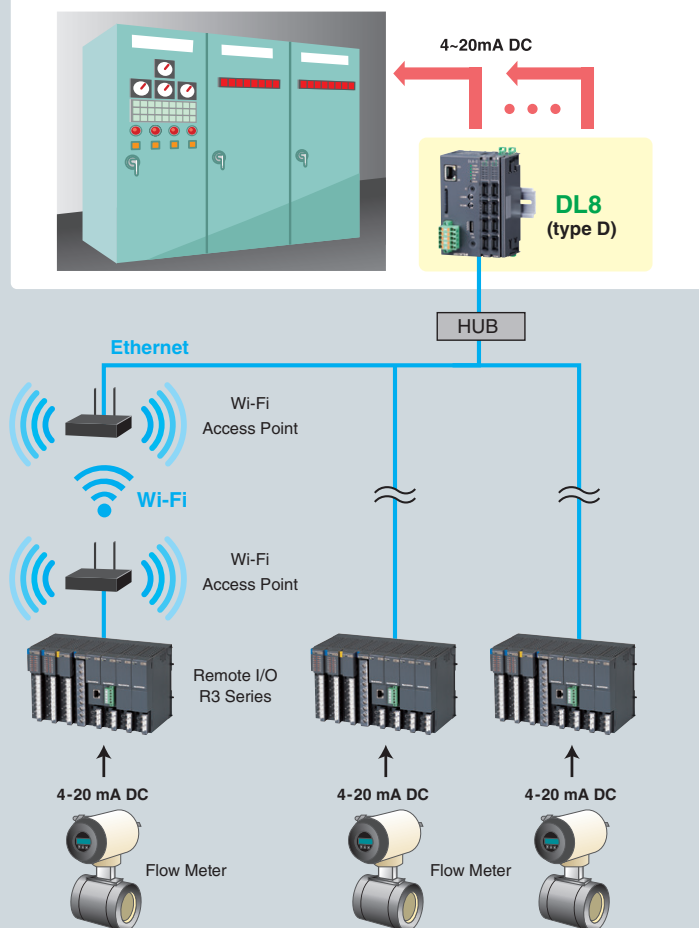
■ Specification Sheet



What's the focus?

- System configuration can be made economically and easily with LAN cables and a hub already familiar to customers.
- Using Wi-Fi wireless communication, running costs can be minimized.
- By using the input card of Remote I/O R3 Series for the 2-wire transmitters, signal conditioners are no longer required.
- DL8 units can be connected up to 12 Remote I/O units and easily expanded.

Instrument Panel



- Web browsed views are images that are subject to change without notice.
- In order to effect the applications on this page, static IP or dynamic DNS is required.
- M-System Company does not provide smart phones and/or telecommunication services.

New year greetings

How do you celebrate and what do you do for New Year? Japanese like to do specific things for good luck at a turning point, including New Year. Since it was believed goddess of lucky directions was appeared with the rising sun of the first day, our ancestors prayed to it for good harvest. Through this custom, we feel we can receive blessings of God by praying to it, and some people try to see and pray to the rising sun of the first day of a year from top of the mountain by climbing up Mt. Fuji, which is the highest mountain in Japan. Also, many of us go to shrines to pray for ones' wishes (health, wealth, academic success, prosperous business, happiness etc) for a year.

The traditional dishes for New Year called "Osechi" is one of most famous fortune food in Japan. There are variety of 20-30 dishes placed in tiered food boxes neatly, and every dish has lucky meaning. I would like to introduce some of them.



[The Top/First Box: celebrate dishes for New Year]

- **Herring roe (Kazunoko), Kelp:** pray for the prosperity of descendants
- **Dried sardine (Tadukuri, Gomame):** wish for a good harvest
- **Black beans (Kuromame):** pray for good health, work hard
- **Mashed sweet chestnuts (Kuri Kinton):** wish for wealth and financial success because of its yellow/gold color
- **Red-white fish sausage:** pray for happiness, red color means charm and white means purity
- **Sweet rolled egg omelet (Datemaki):** pray for advancement in knowledge because its shape is the similar to book which was used to be handscroll in ancient time



[The Second Box: mainly marine based foodstuffs]

- **Shrimp:** pray for longevity because the shape is similar to that of a stooping older person
- **Clam:** pray for harmonious marriage because it doesn't match any shell other than its counterpart
- **Yellowtail:** pray for success in life/business because its name changes according to their size in growth in Japanese

[The Third Box: mainly land-based foodstuffs]

- **Root vegetables:** pray for many more years of happiness because they deeply root in the ground
- **Bamboo shoot:** pray for success in life, children's healthy growth

[The Fourth Box: vinegared dish]

- **Red-white vegetables (Kohaku Namasu):** made by Japanese radish (Daikon) and carrot to pray for happiness and peace
- **Chrysanthemum shaped turnip (Kikkakabu):** to drive away evil spirit, pray for youth and longevity

[The Fifth Box: for gifts and happiness from God]

- **Empty:** in order to put gifts and happiness blessing from God

However, it is too much to prepare five boxes, it is common to prepare two or three boxes at the present day. Moreover, it is popular to buy Osechi because it takes a lot of time to cook it from the beginning at home. Recently, there are many styles of Osechi: Japanese, Chinese, Western, compromise between Japanese and foreign, so we can still enjoy to choose it from variety of fancy Osechi.

May the new year bring you happiness!!!



Ami Nagaoka (nagaoka@m-system.co.jp)

New Members to M-System Sales Team

Yukiko Katayama

ykatayama@m-system.co.jp

Belong to: OSAKA H.Q.
Function: International Operation Group
Start date: October 1, 2016
Hobby: Reading books and watching movies



Message to readers:

Hello everyone. My name is Yukiko Katayama. I became a new member of international operation group since October. I've been working in domestic group of M-System for one year. I'm really pleased that I can work with you.

I'm from Osaka, Japan. Osaka is known as "*Kuidaore*" and there are lots of restaurants offering delicious Japanese dishes. Especially, *Okonomiyaki* and *Takoyaki* are famous and popular dishes in Osaka. When you visit Osaka, please try some *Okonomiyaki* and *Takoyaki*.

I like reading books and watching movies. One of my favorites is *Harry Potter* series. I am going to watch *Fantastic Beasts and Where to Find Them* with my friends. I can not wait! If you have any recommended book or movie, please let me know.

I'm looking forward to working with all of you. Thank you.

Ayaka Seto

seto@m-system.co.jp

Belong to: OSAKA H.Q.
Function: International Operation Group
Start date: October 1, 2016
Hobby: Watching movies



Message to readers:

My name is Ayaka Seto. I became a new member of international operation group since October. It is great working with you.

I'm from Seoul, Korea. I was living in Korea until 20 years old and I came to Japan 10 years ago. In the year 2012, I got married to a Japanese and changed my family name to Seto. I have a 3-year-old son. He looks exactly like my husband.

My hobby is watching movies. I started to watch movies at the theater when I was in the elementary school. The first movie I watched at the theater is *Jurassic Park*. My favorite movie is *Moulin Rouge*. I like musical films, so I also like Disney movies. If there is a movie that you would recommend, please tell me.

I'm very positive person. And I like communicating with people. If you have time, please contact me. Working in the international group is a wonderful opportunity for me. I'm looking forward to working with you. And I'll do my best. Thank you.

NEWS LETTER TEAM'S CORNER



Ye Hu

hu@m-system.co.jp

My family eat Unadon every year in summer, it a bowl of rice topped with grilled eel, because eel is full of vitamin A, B, DHA and other nutrition and also easily digested, people often enjoy eating it during the hot and humid summer days.

One day, I heard on TV that the best taste is from late autumn to winter, when eels start to reserve nutriment into their body, so last month, we ate Unadon in winter for the first time, it was so soft texture in the mouth, absolutely amazing!

If you are epicure, you must come to Japan in winter and try Unadon.



Shinichi Noda

snoda@m-system.co.jp

A new study said that humans have a maximum life span of 115 years.

Scientists have gathered demographic data from 41 countries worldwide and then their findings revealed that even though people life span is increasing, human's life expectancy has glass ceiling up to around 115 years. According to lead researcher of this study, human body life span should be written to its gene.

Thanks to better living environment, improved nutrition and developments of medical science, the number of infant deaths has been dramatically decreased and then elderly people survival rate has been increased. I think this would boost average life span for each country. As of 2016, No.1 is Japan (83.7) , No.2 is Swiss (83.4) and then No.3 is Singapore (83.1) .

I have watched TV program that featured new detected gene that lead to long-term survival, it is called "Sirtuin gene". If we can stimulate this gene and let it activate, the glass ceiling of 115 years will be broken in the near future. One good news for you all, they say red wine polyphenol will work and activate this sirtuin gene. Let's have red wine, Cheers!!



M-SYSTEM CALENDAR

Osaka Head Office & Factory Closed

February 2017							March 2017							April 2017						
M	T	W	T	F	S	S	M	T	W	T	F	S	S	M	T	W	T	F	S	S
		1	2	3	4	5			1	2	3	4	5						1	2
6	7	8	9	10	11	12	6	7	8	9	10	11	12	3	4	5	6	7	8	9
13	14	15	16	17	18	19	13	14	15	16	17	18	19	10	11	12	13	14	15	16
20	21	22	23	24	25	26	20	21	22	23	24	25	26	17	18	19	20	21	22	23
27	28						27	28	29	30	31			24	25	26	27	28	29	30

M-SYSTEM NEWSLETTER "CLIPBOARD"
No.209 January 2017

M-SYSTEM
M-SYSTEM CO., LTD.

URL www.m-system.com
E-mail info@m-system.co.jp

International Sales Department

5-2-55, Minamitsumori, Nishinari-ku, Osaka 557-0063 JAPAN
Tel: +81(6)6659-8201 Fax: +81(6)6659-8510